



Support and Technical Assistance Regionally

SERVING SOUTH SUBURBAN AND EAST CENTRAL ILLINOIS

www.swcccase.org/starnet

Special Event on Page 6

Planning for Inclusion in Early
Childhood

A Panel Discussion

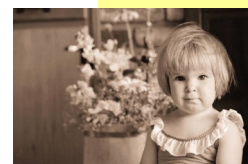
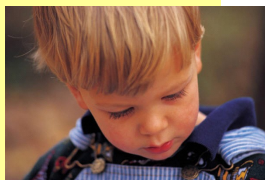
May 4, 2012

At Infnitec Southwest
in Tinley Park

STAR NET Region VI

Workshop Catalogue

January 2012— April 2012






Workshop Catalogue

STAR NET Region VI

January—April 2012

Page 2

Table of Contents

STAR NET Mission and Information on Illinois Professional Standards and Workshop Content Levels	3
About Region VI Workshops	4
 Registration Information	5
Special Workshop Planning for Inclusion in Early Childhood May 4, 2012— Sponsored by Project Choices in Collaboration with STAR NET Region VI	6

Workshop Information

- ◆ January 19, 2012 — Bilingualism in the Early Years: Creating Supportive Learning Environments for Young English Language Learners 7
- ◆ January 20, 2012 — Supporting Young Children with Challenging Behaviors Part II 8
- ◆ January 20, 2012 — *Webinar* My Shirt Tag is Bugging Me: How understanding the Sensory System Can Affect Learning (Must register through IRC/EC) 9
- ◆ January 27, 2012 and February 2, 2012 — Creative Curriculum 5th Edition Part I and Part II (must attend both) 10
- ◆ January 30 and 31, 2012 and Webinar on February 28, 2012 — Using the High/Scope Child Observation Record (COR) Assessment Method 11
- ◆ February 3, 2012 — Focused Portfolios™ For Every Child 12
- ◆ February 17, 2012 — Equalizing the Playing (and Learning) Field: Brain Research and Sex Differences 13
- ◆ March 6, 2012 — Culturally and Linguistically Responsive Assessment Practices For Young English Language Learners 14
- ◆ March 6, 2012 — *Webinar* Autism 101: An Introduction and Overview (must register through IRC/EC) 15
- ◆ March 13, 2012 — Time Management For Teachers 16
- ◆ March 19, 2012 — An Introduction to Teaching Strategies GOLD Assessment 17
- ◆ April 17, 2012 — It's Show Time: Using Video Modeling to Learn 18
- ◆ April 30, 2012 — Training for Transitioning from Early Intervention to Early Childhood Special Education Services 19

Workshop Registration Form

20



STAR NET
Helps
Illinois' Children
Reach for the
Stars

STAR NET Mission

Illinois STAR NET provides a variety of opportunities for personal and professional growth for those who touch the lives of young children,

ages birth through eight, with an emphasis on children with special needs.

STAR NET supports family-centered,

researched and effective practices in early childhood education and care.



Illinois Professional Teaching Standards



The Illinois State Board of Education's rules for Certification require that all certified staff will be expected to demonstrate competence with regard to the Illinois Professional Teaching Standards.

STAR NET workshops will address the Instructional Strategies' Standard. Workshop participants will be informed at each workshop how this Standard will be addressed.



Workshop Content Levels



Content levels of Introductory, Skill-Building or Challenge are noted for each workshop. These levels are offered to assist participants in choosing workshops that will best fit their needs.

Introductory
Introductory workshops provide an overview of a specific topic, offering participants an opportunity to develop an awareness of, or familiarity with the content.

Skill-Building
Skill-Building workshops provide more in depth information on a topic and offer strategies, activities, discussion to help participants utilize the information.

Challenge
Challenge workshops provide opportunities for advanced problem solving and analysis, synthesis or evaluation of the material.





About Region VI and our Workshops



Region VI is funded through the Illinois State Board of Education in cooperation with Southwest Cooperative. One hundred percent of STAR NET's funding is from federal sources. Region VI includes South Suburban Cook County, Grundy, Will, Kankakee, Kendall and LaSalle counties.

The majority of the cost for Region VI workshops are covered by a grant, which is why most workshops are free. Please mail or fax your registration. No phone registrations will be taken.

Region VI's goal is to accommodate all professionals, support personnel, and administrators who work in early childhood special education programs, Preschool For All and Prevention Initiative programs located in our service area as well as parents/guardians who live in Region VI.

Please remember that submitting a registration does not automatically guarantee



participation. STAR NET will contact you by letter approximately two weeks before the event. This letter will indicate the status of your registration (accepted or placed on waiting list). Registration is limited for each workshop.



Please Remember
No one will be admitted without a confirmation letter
Walk-ins are not allowed

Region VI conferences present a variety of current methodologies being used with young children. Participants should note that STAR NET does not endorse specific treatment/methods for children with special needs.

If you have any questions, please call Mary Ann Bonello or Marlene Christ at 708-342-5370.



How to reach STAR NET Region VI

Phone: 708.342.5370

Fax: 708.687.2247

Address:
6020 W. 151st Street
Oak Forest, IL 60452

Region VI Website

www.swcccase.org/starnet





Registration Information

Who should attend Region VI Workshops

Professionals, support personnel, and administrators who work in Early Childhood Special Education programs, Preschool for All and Prevention Initiative programs located in Region VI as well as parents/guardians who live in Region VI are the target audience. All others will be on a first come, first served basis.

Accessibility and Comfort Issues

STAR NET workshops are offered at accessible sites. Other accommodations for those wishing to attend will be made with 48 hours advance notice. For such arrangements, call STAR NET at 708-342-5370. Please note that staff cannot control the room temperature where workshops are held. Please dress accordingly.

Times of Workshops

Region VI workshops begin at 8:30 a.m. for participants to check in, unless otherwise noted. Speakers begin at 9 a.m. There is a break for lunch from noon to 1 p.m. and the workshop ends at 3 p.m. Lunch is not provided. If a specific workshop has a different schedule, that will be explained in the one-page description.

Certificate of Participation

A STAR NET certificate of participation is given to those who attend the complete training. Hours cannot be adjusted to accommodate individual needs. STAR NET is an approved sponsor of continuing education through the Illinois Department of Financial and Professional Regulation for:

Continuing Education

- **Speech/Language Pathologists**
- **Physical Therapists**
- **Occupational Therapists**
- **Social Workers**

Region VI also provides CPDUs for certified school staff recertification through the Illinois State Board of Education. The Illinois Department of Financial and Professional Regulation requires that continuing education credits only be given for time actually spent attending a training program. Individuals seeking credentialing hours through the Illinois EI System should call the EI Training Program at 866.509.3867 or check the EI website at www.illinoiseittraining.org.



Planning for Inclusion in Early Childhood

A Panel Discussion

May 4, 2012

9 a.m. to 3:30 p.m.

Infinitec, 7550 W. 183rd St.,
Tinley Park, IL

*This workshop is sponsored by Project Choices
in Collaboration with STAR NET Region VI*

Are you looking for a way to increase inclusive opportunities for young children? The workshop will feature a panel including administrators, practitioners and family members. They will discuss how they increased inclusion options in their communities and programs. The panelists will also be available to work with small groups to support a team in planning their next steps. Lunch will be provided.

Workshop: Planning for Inclusion in Early Childhood May 4, 2012

Time: Sign in begins at 8:30 a.m. The workshop will begin at 9 a.m. and end at 3:30 p.m.
Participants must attend the full day in order to receive a certificate

Cost: \$35.00 for Professionals
\$120.00 for teams of 4
\$15.00 for Family Members

Registration

A registration form is available to download at www.projectchoices.org

Questions

Call 630-629-0551 or email Project Choices at echoices@aol.com



Bilingualism in the Early Years: Creating Supportive Learning Environments for Young English Language Learners

January 19, 2012

Presenter: Cristina Sanchez-Lopez

Prairie State College, BCEC

202 S. Halsted Street, Chicago Heights, IL 60411

This workshop is offered in collaboration with the Illinois Resource Center/EC

About The Workshop

The presenter will focus on the process young children go through as they learn a second language. Participants will discuss and explore the different stages of second language acquisition and how this process differs from first language acquisition. Discussion will also explore the most effective instructional strategies and assessment practices to support dual language learners, importance of using home language as an essential resource and ideas to help engage families of dual language learners.

About The Presenter

Cristina Sanchez-Lopez is an education specialist at the Illinois Resource Center (IRC). She collaborates with educators in the US and Canada on English Language Learners, and special education; literacy across content areas; parent involvement and supporting Preschool for All educators who serve English Language Learners. Cristina currently teaches graduate courses in the areas of ELL, reading and the foundations of language minority educations. Cristina is co-author on the book *Special Education Considerations for English Language Learners: Delivering a Continuum of Services* as well as various articles and chapters on addressing the needs of ELLS who may struggle in school.

This workshop is limited to 30 participants

***The content level
for this workshop is
Introductory***



Supporting Young Children with Challenging Behaviors

Part II

January 20, 2012

Presenters: Sheila Bauer and Joan Debelak

Joliet Junior College, Business and Communication Center, 1215 Houbolt Road, Joliet, IL

About The Workshop

This workshop is based on the Center on Social Emotional Foundations for Early Learning Training Initiative. It is a continuation of the Positive Behavior Supports: Promoting Social & Emotional Competence in Young Children workshop offered in November, 2011. **This workshop is open to individuals who have attended the Part I training or other trainings that follow the CSEFEL model.**

This interactive training will define the forms and function of communication and identify the behavior mechanisms that contribute to viewing challenging behavior as communication. Participants will explore the function of challenging behavior and identify strategies that may be used to prevent this behavior. Presenters will also outline ideas for positive behavior support plans appropriate for young children, looking at identifying and teaching replacement skills. Strategies for responding to a challenging behavior that do not maintain or reinforce the behavior will be explored.

About The Presenters

Sheila Bauer (MSW), Resource Specialist STAR NET Region VI. Sheila is a social worker who has worked in early intervention and early childhood. She has been trained in the CSEFEL model which links behavior to social emotional development and provides workshops on this topic and many others through STAR NET. Throughout her career Sheila has led parent groups, facilitated children's social groups, provided support in the classroom and contributed to assessment/diagnostic teams.

Joan Debelak (MSW), Resource Specialist STAR NET Region VI. Joan also is a social worker and has been involved in early intervention and early childhood for many years. Like Sheila, Joan has been trained in the CSEFEL model and provides workshops on this topic and many others through STAR NET Region VI. Joan also provides training and technical assistance on a variety of topics including building parent/professional partnerships and transition as well as topics dealing with concerns and needs of families who have young children with special needs.

This workshop is limited to 40 participants

The content level for this workshop is Skill Building



Webinar My Shirt Tag is Bugging Me: How Understanding the Sensory System Can Affect Learning

January 20, 2012

Presenters: Nancy Pufahl and Becky Handler

Location: Webinar 1 to 2:30 p.m.

This webinar is offered in collaboration with the Illinois Resource Center/EC (IRC/EC).

Participants need to register through IRC/EC at

www.thecenterweb.org

When you go to the IRC/EC page, click IRC/EC and then registration form for Fall 2011-2012

About the Presentation

This webinar will provide an overview of the sensory system. There will be discussion on sensory “seekers” and “sensory avoiders.” Suggestions for play activities/modifications will be provided. This is an interactive session.

About The Presenters

Becky Handler is a Resource Specialist for STAR NET Region VI and a Speech Language Pathologist. She worked for many years as a speech language pathologist in a communication development classroom as a teacher and as an inclusion facilitator. Becky has extensive experience consulting in early childhood classrooms, day care sites and Head Start programs. Becky has a M.S. in Speech Language Pathology.

Nancy Pufahl is a Resource Specialist for STAR NET Region VI and provides consultation services to early childhood and primary classrooms, and Preschool for All programs. Before joining STAR NET, Nancy taught in an early childhood special education classroom, and in early intervention as a developmental therapist. Nancy has a M.S. in Early Childhood Education and a B.S. in Education and Physically Handicapped.

This webinar is limited to 75 participants

The content level for this workshop is Introductory



Creative Curriculum 5th Edition Part I
January 27, 2012
Part II will be held on February 7 2012
Presenters: Becky Handler and Nancy Pufahl
Southwest Cooperative Braun Education Center Learning Links
6020 W. 151st Street Oak Forest, Illinois

Participants must attend both days of this workshop to receive a certificate. If you have attended a Creative Curriculum 4th Edition training, it is not necessary to attend this training. You will need to be trained on the new Teaching Strategies Gold Assessment System

About The Workshop

The presenters will explore and review the recently revised Creative Curriculum 5th Edition materials, including the most current research and recommended practices for teaching young children. The group will look at ways to modify the curriculum to use with children in inclusive, blended, or self-contained early childhood classrooms. The presenters will also discuss materials from the new Creative Curriculum Preschool system.

Participants are encouraged to bring their own copy of the Creative Curriculum 5th Edition materials.

About The Presenters

Becky Handler is a Resource Specialist for STAR NET Region VI and a Speech Language Pathologist. She worked for many years as a speech language pathologist in a communication development classroom as a teacher and as an inclusion facilitator. Becky has extensive experience consulting in early childhood classrooms, day care sites and Head Start programs. Becky has a M.S. in Speech Language Pathology.

Nancy Pufahl is a Resource Specialist for STAR NET Region VI and provides consultation services to early childhood and primary classrooms, and Preschool for All programs. Before joining STAR NET, Nancy taught in an early childhood special education classroom, and in early intervention as a developmental therapist. Nancy has a M.S. in Early Childhood Education and a B.S. in Education and Physically Handicapped.

This workshop is limited to 40 participants

The content level
for this workshop
Introductory



Using the High/Scope Child Observation Record (COR) Method of Instruction

January 30 and 31, 2012 (full-day sessions)
February 28, 2012 (webinar from 4 to 6 p.m.)

Presenter: Carol Weisheit

The workshops will be held at Prairie State College, BCEC, Room 1322
202 S. Halsted Street, Chicago Heights, IL 60411

This training is offered in collaboration with the Illinois Resource Center/EC

This workshop includes two full days of training and a webinar.

***Participants must attend the two days of training
and the webinar to receive a certificate.***

Information on registering for the webinar will be shared at the workshop

About The Workshop

This presentation will focus on using the COR to identify what children are learning through their play and the developmental levels in children's anecdotes. Participants will learn how to complete the Child Development Summary, the COR Family Report and how to use the COR to share information with parents.

NOTE: This workshop does not fulfill credit from the HighScope Educational Research Foundation.

Participants will receive CPDU credit as with all workshops.

About The Presenter

Carol Weisheit is a certified HighScope teacher and trainer. She currently works as an early childhood resource specialist with Illinois STAR NET. Carol is the former State Director of Illinois CASA (Court Appointed Special Advocates) and continues to consult with National CASA. Carol also directed childcare programs for low-income families, coordinated and taught in an at-risk prekindergarten program, and served as a parent educator providing home visits to families at-risk.

This workshop is limited to 30 people

***The content level for this
workshop is
Skill Building***



Focused Portfolios™ For Every Child

February 3, 2012

Presenters: Rhonda Clark and Linda Housewright

I-KAN Regional Instruction Center

50 Industrial Park Dr., Kankakee, IL

The workshop is offered in collaboration with the Illinois Resource Center/EC

About This Workshop

The focus for this workshop is the components for effective and appropriate portfolios. The presenters will discuss how to implement this part of the assessment system and connect them to the Illinois Early Learning Standards. Participants will explore ways to develop effective observation techniques, anecdotal writing, photography, conferencing and using the assessment. They will also learn to gather and use information to plan developmentally appropriate learning experiences for each child. Discussion will look at how to relate portfolios to Individual Family Service Plans and Individualized Education programs.

About The Presenter

Rhonda Clark, M.S. Ed Adm, is Principal Consultant, at the Early Childhood Education Division, Illinois State Board of Education. Rhonda received her undergraduate degree from Eastern Illinois University and received her Masters in Education Administration from National Louis University. Rhonda has eighteen years of experience in the Early Childhood Field. She began her career as a lead teacher in a childcare center. In 1995 she opened a private preschool program which she later expanded into a full service child care program. The child care center was NAEYC accredited and included the state funded prekindergarten program as well as a Head Start program. In 2005, she was hired by the Regional Office of Education #12 to coordinate prekindergarten programs located in the local five counties. She joined the Early Childhood staff at the Illinois State Board of Education in April 2008. She holds a level three director credential. Before accepting the position at the State Board of Education she served as a mentor for the State funded Pre-school For All programs as a Curriculum Coach.

Linda Housewright served as an Accountability Liaison for the Illinois State Board of Education (ISBE), and also provided technical assistance across the state with both school and community based state prekindergarten programs. During this time she received training with using the Early Childhood Environmental Rating Scale, a tool used to evaluate state wide prekindergarten programs. Currently, Linda is working as a prekindergarten teacher at Dallas Elementary District #327 where she has worked as Director and teacher for the past twenty-five years. Her classroom was chosen as a long-distance virtual learning site for Western Illinois University (WIU) for four years and during that time she served as a faculty member and adviser in the Early Childhood department.

This workshop is limited to 40 participants

The content level
for this workshop
is Skill Building



Equalizing the Playing (and Learning) Field — Brain Research and Sex Differences

February 17, 2012

Presenter: Jennifer Rosinia

Infinitec Southwest

7550 W. 183rd Street, Tinley Park, IL

About This Workshop

The presenter will examine the question of whether or not there are really brain differences between the sexes, looking at the question: Should we be providing different types of care giving, developmental stimulation and educational programs depending upon whether a child is a boy or a girl? She will begin with a look at the basic biology of brain development with an emphasis on critical periods. A review of the latest research findings about sex differences and similarities will set the stage for discussion related to how children learn through play, the importance of interpersonal interactions as a therapeutic technique and school readiness. Participants will also explore the influential role of media and marketing. Participants will be encouraged to discuss focused topics, including, but not limited to, motor development, sensory processing, social-emotional skills, communication, language and literacy.

About The Presenter

Jennifer Rosinia, Ph.D. OTR/L is an Occupational Therapist and Child Development Specialist. Jennifer has a special interest in sensory processing and neuroscience, the role of emotions and the impact of relationships on the developing child. Adjunct Faculty at the Erikson Institute for many years, Jennifer has taught courses and guest lectured at several colleges and universities around the Chicago area. Jennifer brings a healthy balance of humor, passion and expertise to her presentations. She is the president of Kid Links Unlimited, Incorporated, a company whose mission is to link theory to practice, parents with professionals and kids with their optimal potential.

This workshop is limited to 60 participants

The content level
for this workshop
is Introductory



Culturally and Linguistically Responsive Assessment Practices for Young English Language Learners March 6, 2012

Presenter: Pat Chamberlain

Infinitec Southwest

7550 W. 183rd Street, Tinley Park, IL

About This Workshop

This workshop provides a framework for assessing young dual language learners in linguistically and culturally responsive ways. The presenter will discuss several assessment approaches and their relative strengths and weaknesses, as well as best practice recommendations and challenges in their implementation.

Participants will learn about formal and informal tools to assess language proficiency of dual language learners. They will practice a variety of ways to evaluate language across social and pre-academic contexts and use the assessments to develop culturally and linguistically appropriate individualized education programs (IEPs).

About The Presenters

Pat Chamberlain has over thirty years of experience in the field of education. Pat has served in such roles as faculty member, principal, director, supervisor, parent educator, and teacher of various programs. Pat's focus is in bilingual education. She has been a consultant for the Illinois Resource Center for many years. Pat has her Master's Degree from Northern Illinois University and certifications in special education supervision, bilingual- Spanish, English as a second language and general administration. She has presented a number of workshops locally and nationally. Pat's work has been published in *Linguathon*. She currently serves on the Illinois Early Learning Council-Diversity Committee and is an adjunct faculty member at the University of Illinois-Chicago and the Erikson Institute.

The content level
for this workshop
is Skill Building

This workshop is limited to 60 participants



***Webinar:* Autism 101: An Introduction and Overview**

March 6, 2012

Presenters: Becky Handler and Nancy Pufahl

Location: Webinar 4 to 6 p.m.

This webinar is offered in collaboration with the Illinois Resource Center/EC (IRC/EC).

Participants need to register through IRC/EC at

www.thecenterweb.org

When you go to the IRC/EC page, click IRC/EC and then registration form for Fall 2011-2012

About This Webinar

The presenters will define autism, and discuss the characteristics and possible causes of autism. They will share and explore various instructional techniques and strategies that participants can use when working with young children.

About The Presenters

Becky Handler is a Resource Specialist for STAR NET Region VI and a Speech Language Pathologist. She worked for many years as a speech language pathologist in a communication development classroom as a teacher and as an inclusion facilitator. Becky has extensive experience consulting in early childhood classrooms, day care sites and Head Start programs. Becky has a M.S. in Speech Language Pathology.

Nancy Pufahl is a Resource Specialist for STAR NET Region VI and provides consultation services to early childhood and primary classrooms, and Preschool for All programs. Before joining STAR NET, Nancy taught in an early childhood special education classroom, and in early intervention as a developmental therapist. Nancy has a M.S. in Early Childhood Education and a B.S. in Education and Physically Handicapped.

This webinar is limited to 75 participants

The content level
for this workshop
is Introductory



Time Management for Teachers

March 13, 2012

Presenter: Anna Weselak

Southwest Cooperative Braun Education Center Learning Links
6020 W. 151st Street Oak Forest, Illinois

About This Workshop

Meeting the multitude of daily tasks and challenges in our professional and personal lives requires a strategy and plan. While new technological tools are available to track tasks, calendars and deadlines, effective time management is still a challenge. This presentation will integrate twelve (12) critical areas which include one's attitudes, priorities and goals. The presenter will discuss best practices for controlling procrastination, interruptions, delegation, completing paperwork and working with others.

About The Presenter

Anna Weselak brings her experiences from teaching, business and non-profit to the training field. She has a Masters Degree in Education and is on the faculty of College of DuPage and St. Xavier University. Her extensive experience includes teaching young children. Anna runs her own consulting business, Weselak & Associates, and is an instructor for the International Renewal Institute, Inc., and Associate Trainer for the Center for Teaching Effectiveness. She has held seminars, classes and workshops for a variety of organizations. Anna has been recognized for many of her accomplishments including ; one National and over 25 State PTA Honorary Life Memberships, Lombard Woman of the Year, and a recipient of an Illinois School Board Association Those Who Excel Merit Award.

This workshop is limited to 40 participants

The content level
for this workshop
is Introductory



An Introduction to Teaching Strategies GOLD Assessment

Presenters: Becky Handler and Nancy Pufahl

March 19, 2012

Southwest Cooperative Braun Education Center Learning Links

6020 W. 151st Street Oak Forest, Illinois

About This Workshop

The GOLD assessment helps teachers assess the development and learning of all children, including English and dual-language learners, children with developmental delays, disabilities and children who are advanced learners. This new system supports teachers and promotes appropriate teaching practices that help all children build the foundation they need for school and success.

- ◆ Participants should have already attended an Implementing Creative Curriculum for Preschool workshop OR another research based, developmentally appropriate curriculum
- ◆ Participants are requested to bring a copy of the book *Objectives for Development and Learning Birth Through Kindergarten*, if they have one.

About The Presenters

Becky Handler is a Resource Specialist for STAR NET Region VI and a Speech Language Pathologist. She worked for many years as a speech language pathologist in a communication development classroom as a teacher and as an inclusion facilitator. Becky has extensive experience consulting in early childhood classrooms, day care sites and Head Start programs. Becky has a M.S. in Speech Language Pathology.

Nancy Pufahl is a Resource Specialist for STAR NET Region VI and provides consultation services to early childhood and primary classrooms, and Preschool for All programs. Before joining STAR NET, Nancy taught in an early childhood special education classroom, and in early intervention as a developmental therapist. Nancy has a M.S. in Early Childhood Education and a B.S. in Education and Physically Handicapped.

This workshop is limited to 40 participants

The content level
for this workshop
is Skill Building



It's Show Time: Using Video Modeling to Learn

April 17, 2012

Presenter: Carla Oldham

Infinitec Southwest

7550 W. 183rd Street, Tinley Park

About This Workshop

Video modeling is an effective and highly motivational tool for many children. The presenter will review research on the value and effectiveness of using video modeling as well as current trends for supporting behavior, social skills, speech, and skill development in learners. Reviews of the various formats and styles of video modeling, challenges, strategies and supports will be incorporated into the presentation. Participants will learn the ins and outs of creating their own simple videos and how to use the equipment that is on the market today.

About The Presenter

Carla Oldham is the president and founder of PROUDD. She is a parent with a creative, fun and practical view of living and working with children who have special needs. She has worked with disabilities in many capacities both in the private and public sectors over the last 14 years. She divides her time between working as a private consultant, an autism specialist for a state group program, working for PROUDD and spending time with her family. Carla has twins, one with ADD and the other with autism. She is a frequent presenter at local and state conferences and organizations.

This workshop is limited to 50 participants

The content level
for this workshop
is Introductory



Training for Transitioning from Early Intervention to Early Childhood Special Education Services

Presenter: Region VI Training Team

April 30, 2012

Joliet Junior College, Smith Business & Technology Center
1215 Houbolt Road, Joliet, Illinois

About This Workshop

This collaborative training has been developed to train early childhood and early intervention staff and administrators and parents about the state and federal requirement of transition from early intervention (Part C) to early childhood special education services (Part B). This training will assist EI and school districts in meeting the obligation of IDEA to provide a smooth and effective transition for children and their families from EI to school district services. Topics such as evaluation and eligibility; transition meetings and responsibilities; timelines; best practice recommendations; and new state forms will be discussed. This training is offered in collaboration with the Illinois State Board of Education, the Bureau of Early Intervention, Early Intervention Training Program and Child Find.

About The Presenter

This workshop will be presented by the STAR NET Region VI Transition training team, including representatives from the local Child and Family Connections office.

This workshop is limited to 40 participants

The content level
for this workshop
is Introductory



Region VI Workshop Registration Form

Early Childhood Special Needs Workshops from January—April 2012

Please fill out the registration form completely, and please PRINT clearly. Check which workshop(s) you wish to attend. **Submitting a registration does not automatically guarantee participation.** Region VI will contact you by letter approximately two weeks before the event. This letter will indicate the status of your registration (accepted or placed on waiting list). The number of registrations accepted for each workshop varies, and is listed at the bottom of the individual workshop descriptions. Registration forms must be filled out COMPLETELY and use only one form for each registrant. Please use one form to register for all the workshops you plan to attend. PLEASE PRINT. Walk-in or phone registrations will not be accepted. **Please mail or fax COMPLETED registration to STAR NET Region VI. Workshops fill up quickly, so register as soon as possible. Region VI ... 6020 West 151st Street ... Oak Forest, IL 60452... Atten: Mary Ann Bonello...Phone: 708-342-5370...Fax: 708-687-2247 Please refer to the workshop catalogue for complete information about the workshops and Region VI policies regarding workshop attendance. Email Address: starnet@swcccase.org**

Name _____

Phone Number where you can be easily reached _____

Email Address that you check on a regular basis _____

(please don't forget to fill this in)

School (include district #), or list full name of agency where you work _____

Work Address _____ City/State/Zip _____

Home Address _____ City/State/Zip _____

- _____ Jan. 19, 2012— Bilingualism in the Early Years: Creating Supportive Learning Environments for Young English Language Learners
- _____ Jan. 20, 2012— Supporting Young Children with Challenging Behaviors; Phase Two
- _____ Two Dates — Creative Curriculum 5th Edition Part I Jan. 27, 2012 and part II Feb. 7, 2012
- _____ Jan. 30 and 31, 2012 (workshops) Feb. 28, 2012 (webinar) — Using the High/Scope COR (Child Observation Record) Method of Assessment
- _____ Feb. 3, 2012 — Focused Portfolios™ For Every Child
- _____ Feb. 17, 2012 — Equalizing the Playing (and Learning) Field — Brain Research and Sex Differences
- _____ Mar. 6, 2012 — Culturally and Linguistically Responsive Assessment Practices for Young English Language Learners
- _____ Mar. 13, 2012 — Time Management for Teachers
- _____ Mar. 19, 2012 — An Introduction to Teaching Strategies Gold Assessment
- _____ Apr. 17, 2012 — It's Show Time: Using Video Modeling to Learn
- _____ Apr. 30, 2012 — Training for Transitioning from Early Intervention to Early Childhood Special Education Services

Program Affiliation (check one)

Position (check one)

- _____ Child Care
- _____ Community Pre-School
- _____ Early Intervention (EI)
- _____ EC Special Education (ECSE)
- _____ Blended EC Special Education/Preschool for All
- _____ Head Start
- _____ Kindergarten-3
- _____ Preschool for All
- _____ State Prevention Initiative
- _____ 1/2 day ECSE/1/2 day Preschool For All
- _____ Other (Please list) _____

- _____ Administrator
- _____ Developmental Specialist (EI)
- _____ Family Educator
- _____ Teacher
- _____ Teacher Assistant
- _____ Occupational Therapist
- _____ Physical Therapist
- _____ Psychologist
- _____ Service Coordinator (EI)
- _____ Speech language Pathologist
- _____ Social Worker
- _____ Family Member—Please list birth date of child with special needs _____
- _____ Other (Please list) _____